

MUTOH

Creation, we make it happen...



XpertJet 1642WR Pro

Water-based Inkjet Printer



Media width
Max.1625mm



Dual Head



CMYK

High productivity, print quality and user convenience

MUTOH's new XpertJet 1642WR Pro is a 64" - 1625mm wide water-based inkjet printer with a new platform that inherits the properties of XpertJet series. Two new extra wide print heads achieve high productivity with incredible print speed, and highest print quality thanks to best in class dot placement accuracy. Various new features provide improve user convenience.

The MUTOH original dye-sublimation ink provides superior media transfer, achieves high density colors with less ink consumption. The fast ink drying enables printings on thinner/lighter transfer papers, and excellent jetting and color stability support prolong printing.

The XertJet 1642WR Pro delivers high quality graphics onto a wide range of materials such as trade show graphics, flags, banners, custom interior designs, apparel, sports uniforms and more.

MUTOH brings the best "Made in Japan Quality" to the various markets.

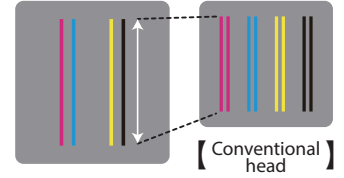


MUTOH “Made in Japan Quality”

Printing technologies for high image quality and high productivity

New print head
“AccuFine” **ACCUFINE**

“AccuFine” new extra wide and high density piezo print head with the best in class ink drop placement accuracy enables both high-speed printing and high image quality. The two staggered print heads achieve typical production speed between 20.83m²/h and 74.48m²/h. Even at high speed, the “AccuFine” can produce high-quality solid printing with less banding.



ACCUFINE
*This is different from the actual ink arrangement

MUTOH's unique technologies for automation and efficiency

Automatic Bi-Directional adjustment
“DropMaster 2”



Built-in sensor on the carriage automatically calibrates bi-directional alignments, and saves time and reduces variation in adjustment among operators.

Automatic media feed adjustment
”FEED MASTER”

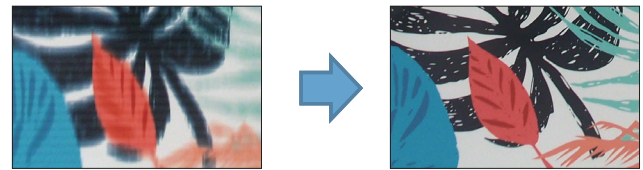


By printing a print pattern and reading it with a sensor, paper feed correction is performed automatically.

Media selection function
”Nozzle Area Select”



Print temporarily using blocks of active nozzles when clogged nozzles failed to recover

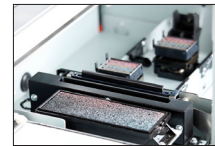


Media roll balance management
”Media Tracker”



By printing a barcode on the end of media, the printer will read the barcode and recognize the amount of media remaining when the media roll is loaded at a later date.

Automatic nozzle checking

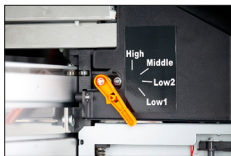


Automatically detect missing nozzles and clean the nozzles to continue the operations.

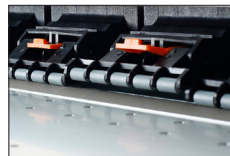
*This function does not guarantee for the perfect accuracy of detection.

High media compatibility

Equipped with a mechanism that enables media transport in optimal conditions. An optional heavy duty take-up system supports roll media weights up to 100kg.



• 4 step PG settings



• Multi-Stage pressurizing mechanism



• Heavy duty take-up unit (optional)

MUTOH dye sublimation ink DH21



4 colors (K,C,M,Y)

- Excellent transfer performance achieves high color density with low ink volume
- Fast-drying performance enables printing on thin and light weight transfer paper
- Superior color rendering performance
- Excellent jetting and color stability support prolong printing

Specifications

Print head	Print method	On-demand piezo drive system
	Head height	Low 1: 1.5mm, Low 2: 2.0mm, Mid.: 2.5mm, High: 4.0mm
	Number	2 staggered
Media	Maximum roll media width	Maximum : 1,625mm
	Maximum media thickness	0.4 ~ 1.0mm
	Size	Φ200 mm or less / 2 inches or 3 inches / 30kg or less
Maximum printable width	1,615mm	
Maximum print length	1,500m	
Ink	Type	Dye sublimation ink “DH21”
	Color	4-color (Black, Cyan, Magenta, Yellow)
	Amount	1,000ml / 2,200ml ink bag

Print resolution	Maximum 1200dpi	
Interface	Ethernet (10BASE-T / 100BASE-TX)	
Power supply	Voltage : AC 100V~120V ±10% / AC 200V~240V ±10% Frequency : 50/60Hz ±1Hz	
Environmental condition	Printer operation	Temperature : 20°C~32°C Humidity : 40%~60% No condensing
	Power consumption	Operation AC100V~120V, 1450W or below / AC200V~240V, 1470W or below Sleep mode AC100V~120V, 23W or below / AC200V~240V, 20W or below
External dimensions (W)x(D)x(H)	Main body: 2770mmx895mmx1428mm(cover closed) / (when installing 2200ml ink bag cases:1712mm)	
Weight	Main body: 137kg Stand: 32kg	
RIP software	FlexiSIGN & PRINT MUTOH Edition, ONYX	