

For Immediate Release

**A new flagship model with productivity up to 189% higher than the existing model  
XpertJet 1682SR Pro, eco solvent printer for 64"/1.6m wide media**

MUTOH INDUSTRIES, Ltd.

MUTOH INDUSTRIES LTD., a leading manufacturer of wide-format inkjet printers, affiliated with MUTOH HOLDINGS CO., LTD. today announces the launch of their new 64"/1,625mm wide eco solvent inkjet printer, XpertJet 1682SR Pro, a successor model to XpertJet 1682SR.

The XpertJet 1682SR Pro is equipped with two units of AccuFine HD with more nozzles, which is newly added to extra wide and high-density piezo print head, AccuFine. Compared to the existing model, the XpertJet 1682SR Pro is up to 189 %\* faster. In addition, this model inherits a platform designed to improve operability and reduce operator workload, and it is equipped with various functions to provide high user assistance. The XpertJet 1682SR Pro is the flagship model of the XpertJet series that deliver high image quality and high productivity by combining MUTOH's unique traditional and advanced technologies.

\*Comparison between the new High Quality mode and the conventional Quality2 mode (8-color configuration)

The XpertJet 1682SR Pro brings the best "Made in Japan Quality" to various markets such as banners, trade show graphics, indoor and outdoor signs, POP displays, vehicle wrap and more.



## **XpertJet 1682SR Pro**

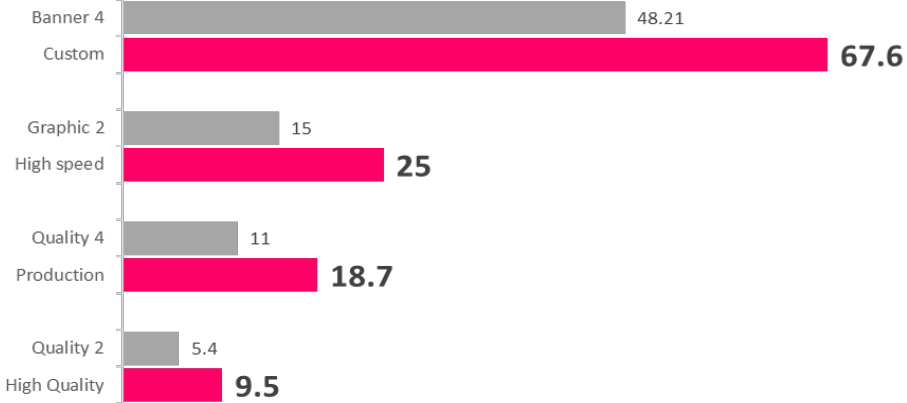
64"/1,625mm wide eco solvent printer

Dual Head: 8 colors (KCMYLcLmLkOr) / 4 colors (CMYK) x 2

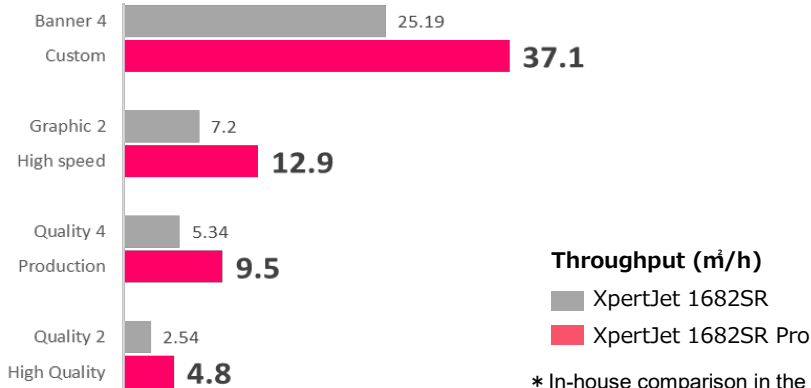
Two units of AccuFine HD with more nozzles achieve high productivity up to 176% in the speed-oriented 4-color x 2 configuration and up to 189% in the 8-color configuration with a wide color gamut compared to the existing model.



### CMYK x 2 4-color configuration

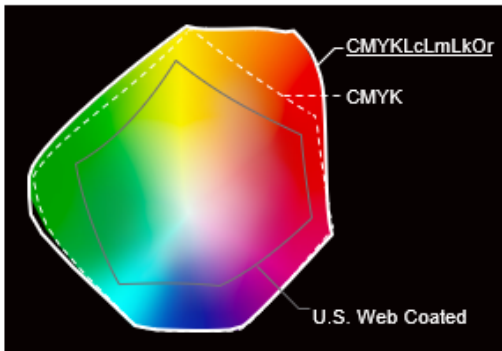


### CMYK LcLmLkOr 8-color configuration



**Throughput (m³/h)**  
 ■ XpertJet 1682SR  
 ■ XpertJet 1682SR Pro  
 \* In-house comparison in the same level of image quality

In 8 color-configuration, the "natural and smooth gradation" of the light inks and the "rich expression" and "vivid color development" of the warm colors enhanced by the orange ink delivers printing with "beauty" and "impact" that is ideal for Sign & Graphics.



Orange ink expands the color gamut for rich expression



With Orange ink  
Clearer and more vivid colors

Combination of MUTOH's unique traditional technology and the latest unique technologies achieve high-precision and high-quality printing



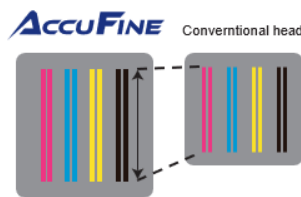
**High-precision aluminum rail structure** that only MUTOH can provide, refined by the "Drafter", a famous design drafting machine



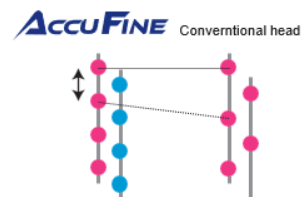
**The 3 Key Building Blocks** enable high quality printing

**The 3 Key Building Blocks enable high quality printing**

**AccuFINE** is a new extra wide and high-density piezo print head that dramatically improves the ink dot landing accuracy, providing high quality solid printing with less banding even at high speed. It also reduces the misalignment of the ink landing position, thereby mitigating image quality degradation.

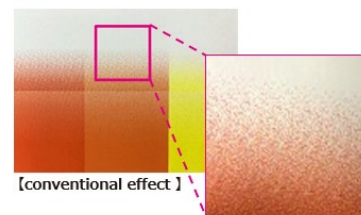
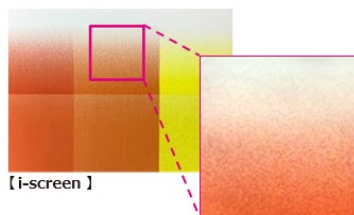


**Increased nozzle row length**  
Contributes to higher productivity



**High density nozzle pitch**  
Contributes to higher image quality

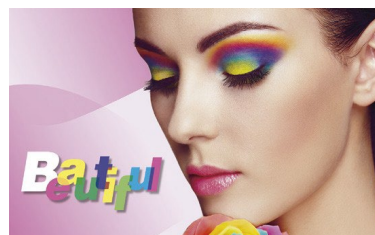
**i-screen**, the new print effect created from MUTOH's Intelligent Interweave printing technology, optimizes the AccuFINE print head. By arranging the dots in a way that takes into account how they look, this reduces banding for smoother print images.



MUTOH's genuine RIP software, **VerteLith**, maximizes the performance of the XpertJet 1682SR Pro. It provides more beautiful image quality with less variation in color density and smoother gradations.



VerteLith won the EDP Award 2021 in the Workflow Technology category



Other key features of the XpertJet 1682SR Pro are as follows.

- MUTOH's unique technologies for automation and efficiency
  - Bi-Directional adjustment, DropMaster2  
A built-in sensor on the carriage automatically calibrates bi-directional alignments, and saves time and reduces validation in adjustment among different operators.
  - Media feed adjustment, FEED MASTER  
By printing a print pattern and reading it with a sensor, paper feed correction is performed automatically.
  - Nozzle selection function, Nozzle Area Select  
Nozzle area select temporarily prints using selected areas of active nozzles when clogged nozzles fail to recover.
  - Media roll balance management, Media tracker  
Media tracker manages the remaining media by printing barcodes before removing roll in use. It will read the barcode when reloading that roll. Streamlines management of remaining capacity for multiple media.
- Four head height settings  
The optimal print head height can be selected from 4 stages depending on the media being used. This reduces the risk of contact, and also provides stable print quality.
- Partial pressure cancel mechanism  
To prevent cockling, the pressure rollers can be individually canceled to finely adjust the pressure applied to the media. A wide range of media types can be fed under optimal conditions.
- MUTOH Status Monitor (MSM) enables check the printer's operation status in real time.

The XpertJet 1682SR Pro is paired with MUTOH MS41 eco solvent ink that excels in color reproduction, weather resistance, and ease of maintenance. The ink has been certified UL GREENGUARD Gold, meaning it doesn't emit harmful levels of chemicals into indoor. Ink bags of 1,000ml and 300ml are available for each color of CMYKLcLmLk, and orange ink is available in 300ml bag only.



MUTOH makes continuous efforts to provide diverse needs of customers adding the XpertJet 1682SR Pro to the market.

<Contact>  
International Business Division  
MUTOH INDUSTRIES LTD.  
TEL +81-3-6758-7020 / FAX +81-3-6758-7021  
E-mail: [ibd@mutoh.co.jp](mailto:ibd@mutoh.co.jp)  
HP: <https://www.mutoh.co.jp/en/>

<Product Specifications>

Printer model		XPJ-1682SR-P
Print head	Print method	On-demand piezo drive system
	Head height	Low1: 1.5mm, Low2: 2.0mm, Middle: 2.5mm, High: 4.0mm
	Number	2
Media	Roll media width	Maximum: 1,625mm Minimum: 500mm
	Max. media thickness	0.3mm (Low1), 0.8mm (Low2), 1.3mm (Middle), 2.8mm (High) * 1mm or less is recommended.
	Diameter	Φ200mm or less
	Core diameter	2 inches or 3 inches
	Weight	30kg or less
Maximum printable width		1,615mm
Maximum print length		1,500m
Ink	Type	MS41 eco solvent ink
	Color	4 colors (Black, Cyan, Magenta, Yellow) 8 colors (Black, Cyan, Magenta, Yellow, Light cyan, Light magenta, Light black, Orange)
	Amount	1,000ml bag / 300ml bag *orange is available in 300ml ink bag only.
Interface		Gb-Ethernet (1000BASE-T)
Power supply		Voltage: AC 100V~120V ±10% / AC 200V~240V ±10% Frequency: 50/60Hz ±1Hz
Environmental condition	Printer Operation	Temperature: 20°C~32°C Humidity: 40%~60% No condensing
	Accuracy Guaranteed	Temperature: 22°C~30°C Humidity: 40%~60% No condensing
Power consumption	Operation	AC100V~120V/AC200V~240V: 1100W or less
	Sleep mode	AC100V~120V/AC200V~240V: 30W or less
External dimensions (W) x (D) x (H)		2,770mm x 895mm x 1,428mm (1,611mm when ink case is installed)
Weight		173.0 kg (printer: 141.0kg, Stand: 32.0kg)
RIP software		VerteLith (MUTOH genuine RIP software)

\*Specifications are subject to change without notice.