

For Immediate Release

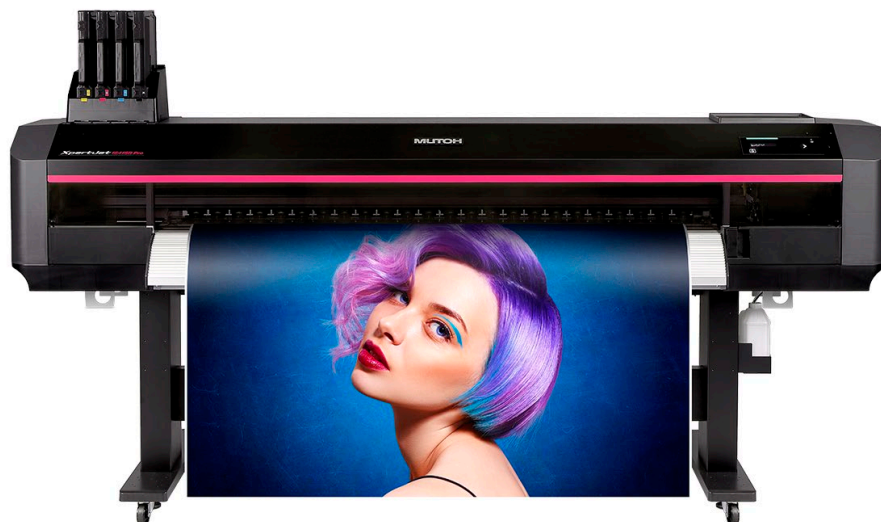
The best-balanced model for high image quality and high productivity
64"/1.6m wide eco solvent printer with a new print head
"XpertJet 1641SR Pro"

MUTOH INDUSTRIES

MUTOH INDUSTRIES LTD., a leading manufacturer of wide-format inkjet printers, affiliated with MUTOH HOLDINGS CO., LTD. today announces the launch of their new 64"/1,625mm wide eco solvent inkjet printer, "XpertJet 1641SR Pro", a successor model to XpertJet 1641SR.

"The XpertJet 1641SR Pro" inherits a platform designed to improve operability and reduce operational workload. It is an uncompromising standard model that balances high image quality and high productivity by adopting a new print head.

The XpertJet 1641SR Pro brings the best "Made in Japan Quality" to various markets such as banners, trade show graphics, indoor and outdoor signs, POP displays, vehicle wrap and more.



***XpertJet* 1641SR Pro**

64"/1,625mm wide eco solvent printer

Single Head / 4 Colors (CMYK)

Combination of MUTOH's traditional technology and their latest technologies

"The XpertJet Pro series, which is a further evolution of the XpertJet series, achieves high-precision and high-quality printing by combining MUTOH's traditional unique technology, the "high-precision aluminum rail structure" which was refined with the "Drafter", a famous drafting machine, and their latest unique technologies.

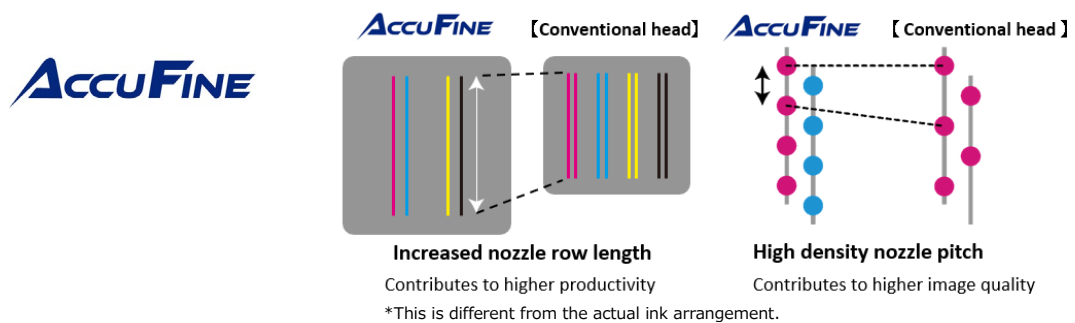


MUTOH's traditional unique technology
"high-precision aluminum rail structure"

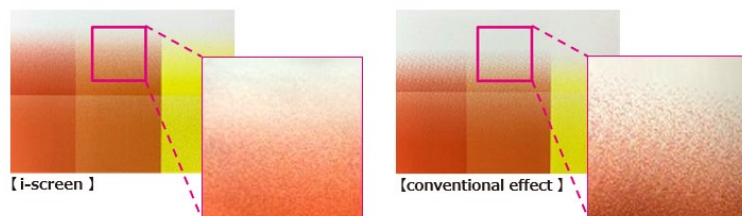


MUTOH's latest unique technologies
[AccuFINE][i-screen][VerteLith]

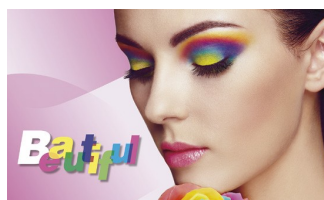
"AccuFINE" is a new extra wide and high-density piezo print head that dramatically improves the ink dot landing accuracy, providing high quality solid printing with less banding even at high speed. It also reduces the misalignment of the ink landing position, thereby mitigating image quality degradation.



"i-screen" the new print effect, created from MUTOH's "Intelligent Interweave" printing technology, optimizes the new "AccuFINE" print head. By arranging the dots in a way that takes into account how they look, this reduces banding for smoother print images.



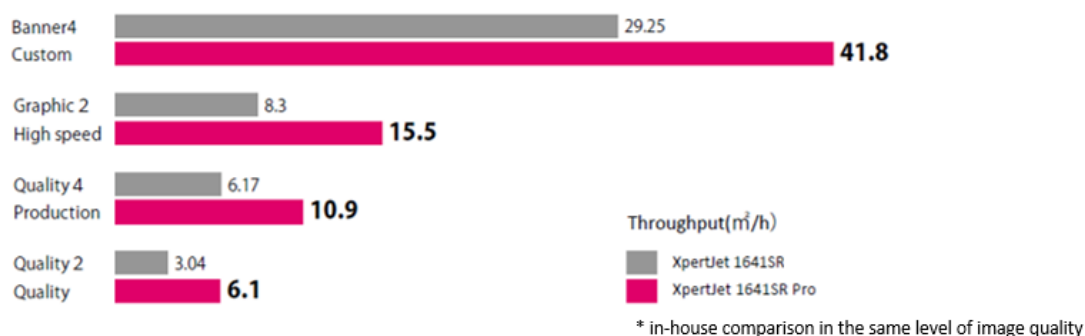
MUTOH's genuine RIP software "VerteLith" maximizes the performance of the XpertJet 1641SR Pro. It provides more beautiful image quality with less variation in color density and smoother gradations.



High productivity achieved with the new "AccuFine" print head

The "AccuFine" has longer nozzle lines for improved productivity. It achieves up to 200% in productivity compared to the conventional model in the same level of image quality.

Productivity comparison with conventional model



Combining the features and convenience that many users are looking for, the XpertJet 1641SR Pro streamlines their daily workflow. Other key features are as follows.

- **MUTOH's unique technologies for automation and efficiency**
 - Bi-Directional adjustment "DropMaster2"
A built-in sensor on the carriage automatically calibrates bi-directional alignments, saving time and reduces adjustment inconsistencies among different operators.
 - Media feed adjustment "FEED MASTER"
By printing a print pattern and reading it with a sensor, paper feed correction is performed automatically.
 - Nozzle selection function "Nozzle Area Select"
Nozzle area select temporarily prints using selected areas of active nozzles when clogged nozzles fail to recover.
 - Media roll balance management "Media tracker"
 - When removing a media, a barcode is printed on the end of the media to record the remaining amount. When loading the media again, the barcode is read by the sensor and the remaining capacity is recognized.
- **Four head height settings**

Selecting the optimal height of the print head and improving media compatibility reduces the risk of contact and maintains stable print quality.
- **Multi-stage pressurizing mechanism**

The pressure mode can be set to four levels: high, middle, low and partial pressure by adjusting the position of the media set lever and the pressure arms.

Thin paper and soft media can be supported by setting the pressure low. Media cockling can be minimized by canceling multiple pressure rollers individually.
- **MUTOH Status Monitor**

MUTOH Status Monitor (MSM) enables users to check the printer's operation status in real time.

The XpertJet 1641SR Pro is paired with MUTOH's eco solvent ink "MS41" that excels in color reproduction, weather resistance, and ease of maintenance. The ink has been certified UL GREENGUARD Gold, meaning it doesn't emit harmful levels of chemicals into indoor.

Ink bags of 1,000ml and 300ml are available for each color of CMYK.



MUTOH makes continuous efforts to provide diverse needs of customers adding the XpertJet 1641SR Pro to various market.

<Contact>

International Business Division
MUTOH INDUSTRIES LTD.
TEL +81-3-6758-7020 / FAX +81-3-6758-7021
E-mail: ibd@mutoh.co.jp
HP: <https://www.mutoh.co.jp/en/>

<Product Specifications>

Printer model		XPJ-1641SR-P
Print head	Print method	On-demand piezo drive system
	Head height	Low1: 1.5mm, Low2: 2.0mm, Middle: 2.5mm, High: 4.0mm
	Number	1
Media	Roll media width	Maximum: 1,625mm Minimum: 500mm
	Max. media thickness	0.3mm (Low1), 0.8mm (Low2), 1.3mm (Middle), 2.8mm (High) * 1mm or less is recommended.
	Diameter	Φ200mm or less
	Core diameter	2 inches or 3 inches
	Weight	30kg or less
Maximum printable width		1,615mm
Maximum print length		1,500m
Ink	Type	Eco solvent ink "MS41"
	Color	4-Color (Black, Cyan, Magenta, Yellow)
	Amount	1,000ml bag / 300ml bag
Interface		Gb-Ethernet (1000BASE-T)
Power supply		Voltage: AC 100V~120V ±10% / AC 200V~240V ±10% Frequency: 50/60Hz ±1Hz
Environmental condition	Printer Operation	Temperature: 20°C~32°C Humidity: 40%~60% No condensing
	Accuracy Guaranteed	Temperature: 22°C~30°C Humidity: 40%~60% No condensing
Power consumption	Operation	AC100V~120V/AC200V~240V: 1100W or less
	Sleep mode	AC100V~120V/AC200V~240V: 30W or less
External dimensions (W) x (D) x (H)		2,770mm x 895mm x 1,611mm (when ink case is installed)
Weight		173.0 kg (printer: 141kg, Stand: 32.0kg)
RIP software		VerteLith (MUTOH genuine RIP software)

*Specifications are subject to change without notice.