



January 5, 2022

For Immediate Release

A new 54"/1.3m wide eco solvent printer "XpertJet 1341SR Pro" achieves  
High Productivity, High Print Quality and Remarkable Cost Performance

MUTOH INDUSTRIES

MUTOH INDUSTRIES LTD., a leading manufacturer of wide-format inkjet printers, affiliated with MUTOH HOLDINGS CO., LTD. today announces the launch of their new 54"/1,371mm wide eco solvent inkjet printer, "XpertJet 1341SR Pro" from the MUTOH XpertJet series which delivers excellent print quality and high productivity. In a compact body that's easy to handle, it is equipped with MUTOH's latest unique technologies, and provides perfectly balancing cost and performance.

The XpertJet 1341SR Pro brings the best "Made in Japan Quality" to various markets such as banners, trade show graphics, indoor and outdoor signs, POP displays, vehicle wrap and more.



***XpertJet* 1341SR Pro**

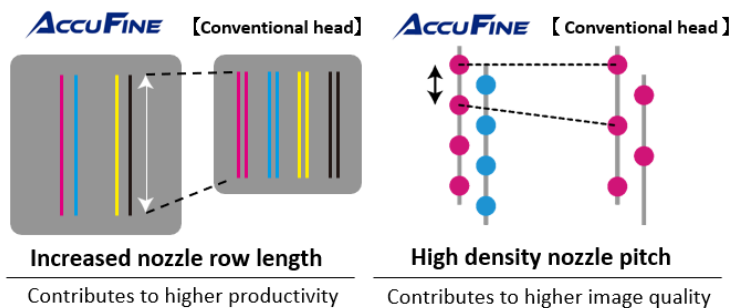
54"/1,371mm wide eco solvent printer

Single Head / 4 Colors (CMYK)



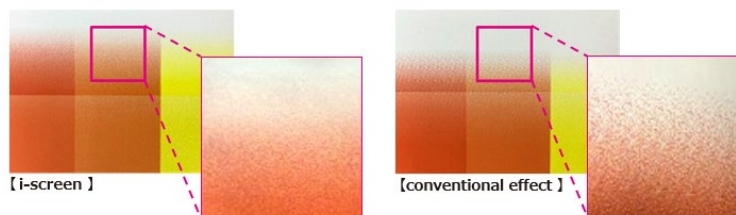
The XpertJet 1341SR Pro is a successor model to the best-selling “ValueJet 1324X” with a space-saving design. The XPJ-Pro series comes with the newly developed “AccuFINE” print head, the new print effect “i-screen”, and the genuine RIP software “VerteLith”. The integration of these new features enables both high-speed printing and high image quality.

The “AccuFINE” print head is wider and delivers higher density with more accuracy than conventional print heads achieving both high-speed printing and excellent image quality. Even at high speed, the “AccuFINE” print head can produce high-quality solid printing with less banding. It also reduces misalignment of the landing position due to the increased distance from the print head to the print surface, thereby mitigating image quality degradation.

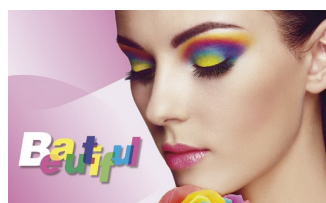


\*This is different from the actual ink arrangement.

The new print effect “i-screen”, created from MUTOH’s “Intelligent Interweave” printing technology, optimizes the new print head “AccuFINE”. By arranging the dots in a way that takes into account how they look, this reduces banding for smoother print images.



The MUTOH genuine RIP software “VerteLith” maximizes the performance of the XpertJet 1341SR Pro and delivers more beautiful image quality with smooth grain with less variation in density.



Other key features of the XpertJet 1341SR Pro are as follows. Combining with the features and convenience that many users are looking for, it streamlines their daily workflow.

- MUTOH's unique technologies for automation and efficiency
  - Bi-Directional adjustment “DropMaster2”  
A built-in sensor on the carriage automatically calibrates bi-directional alignments, and saves time and reduces validation in adjustment among different operators.
  - Media feed adjustment “FEED MASTER”  
By printing a print pattern and reading it with a sensor, paper feed correction is performed automatically.
  - Nozzle selection function “Nozzle Area Select”  
Nozzle area select temporarily prints using selected areas of active nozzles when clogged nozzles fail to recover.
  - Media roll balance management “Media tracker”  
Media tracker manages the remaining media by printing barcodes before removing roll in use.  
It will read the barcode when reloading that roll. Streamlines management of remaining capacity for multiple media.
- Three head height settings  
The optimal print head height can be selected from 3 stages depending on the media being used. This reduces the risk of contact, and also provides stable print quality.
- Partial pressure cancel mechanism  
To prevent cockling, the pressure rollers can be individually canceled to finely adjust the pressure applied to the media. A wide range of media types can be fed under optimal conditions.
- MUTOH Status Monitor (MSM) enables check the printer’s operation status in real time.

The XpertJet 1341SR Pro is paired with MUTOH's new eco solvent ink "VJ-MS31" that excels in color reproduction, weather resistance, and ease of maintenance. The ink has been certified UL GREENGUARD Gold, meaning it doesn't emit harmful levels of chemicals into indoor. Ink cartridges of 220ml and ink bags of 1,000ml are available for each color of CMYK.



MUTOH makes continuous efforts to provide diverse needs of customers adding the XpertJet 1341SR Pro to the market.

<Contact>  
International Business Division  
MUTOH INDUSTRIES LTD.  
TEL +81-3-6758-7020 / FAX +81-3-6758-7021  
E-mail: [ibd@mutoh.co.jp](mailto:ibd@mutoh.co.jp)  
HP: <https://www.mutoh.co.jp/en/>

<Product Specifications>

Printer model		XPJ-1341SR-P
Print head	Print method	On-demand piezo drive system
	Head height	Three-level adjustment of 1.5mm, 2.0mm, and 2.5mm
	Number	1
Media	Available roll media width	Maximum: 1,371mm
	Media thickness	0.3mm (Low), 0.8mm (Middle), 1.3mm (High)
	Diameter	Φ150 mm or less
	Core diameter	2 inches or 3 inches
	Weight	19kg or less
Maximum printable width		1,361mm
Maximum print length		200m
Ink	Type	Eco solvent ink (VJ-MS31)
	Color	4-Color (Black, Cyan, Magenta, Yellow)
	Amount	220ml/1,000ml
Interface		Ethernet (10BASE-T / 100BASE-TX)
Power supply		Voltage: AC 100V~120V ±10% / AC 200V~240V ±10% Frequency: 50/60Hz ±1Hz
Environmental condition	Printer Operation	Temperature: 20°C~32°C Humidity: 40%~60% No condensing
	Accuracy Guaranteed	Temperature: 22°C~30°C Humidity: 40%~60% No condensing
Power consumption	Operation	AC100V~120V/AC200V~240V: 1560W or less (with heater ON)
	Sleep mode	AC100V~120V/AC200V~240V: 21W or less
External dimensions (W) x (D) x (H)		Printer mounted on stand:1,916mm x 685mm x 1,218mm (when cover closed)
Weight		86.0 kg (printer: 66.0kg, Stand: 20.0kg)
RIP software		VerteLith (MUTOH genuine RIP software)

\*Specifications are subject to change without notice.